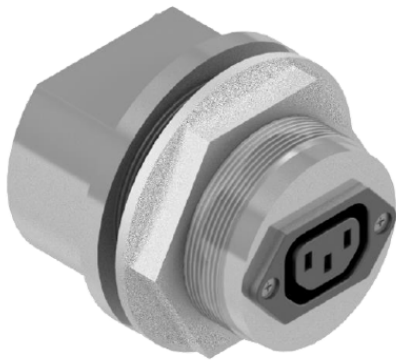


***Pasif* AC10 AC Power (10A) Electromagnetic Interference (EMI) Filter**



The *Pasif* AC10 is a high-performance EMI power filter featuring integrated IEC connectors. The power filter module is designed to provide superior RF isolation while allowing convenient, seamless access to AC power. Engineered for applications requiring stringent EMI suppression, it is ideal for desktop RF Shielded Test Enclosures, RF Shielded Racks, Anechoic Chambers, and RF Screen Rooms. Built with a rugged aluminum housing and advanced filtering technology, it delivers exceptional performance with at least 80dB of RF rejection from 125MHz to 40 GHz and >100dB from 1.5GHz to 40GHz.

Features:

- Universal IEC connectors for global compatibility
- Precision engineered milled aluminum construction with nickel plating for superior shielding
- High-performance RF filtering >80dB from 125MHz and >100dB from 1.5GHz to 40 GHz
- Rated for 250VAC at 10 Amps with integrated safety fused for reliable operation

**The *Pasif* AC10 EMI Power Filter
The critical choice when blocking EMI is paramount.**

Specifications

Filter Performance	Shielding Effectiveness	>100dB from 10kHz to >20GHz (typical)
	Insertion Loss	>80dB from 125MHz to 40GHz (typical) >100dB from 1.5GHz to 40GHz (typical)
Electrical Performance	Voltage	100VAC to 250VAC; 350VAC Max.
	Current	10A Max.
	Power Source	Single Phase; 50/60Hz
	Safety	10A Fuse on C14 Input.
Safety and Regulatory	File Number	TBD
	Standards	TBD
Environmental	Operating Temperature	0°C - 40°C (32°F - 104°F) Continuous
	Humidity	5% - 90% (non condensing)
Construction	Filter Housing	Aluminum w/Electroless Plated Nickel
	Dimensions	3.20" x 3.20" x 3.31"
	Mounting	2.25-16 UN Threaded Pipe 1.5" Length Aluminum Chem-Filmed Flange Nut
	Connectors	IEC 60320 C-14 (Input) IEC 60320 C-13 (Output)

Drawing

